



Installation Instructions EZ-Go LONG TRAVEL



Proudly made in the U.S.A.

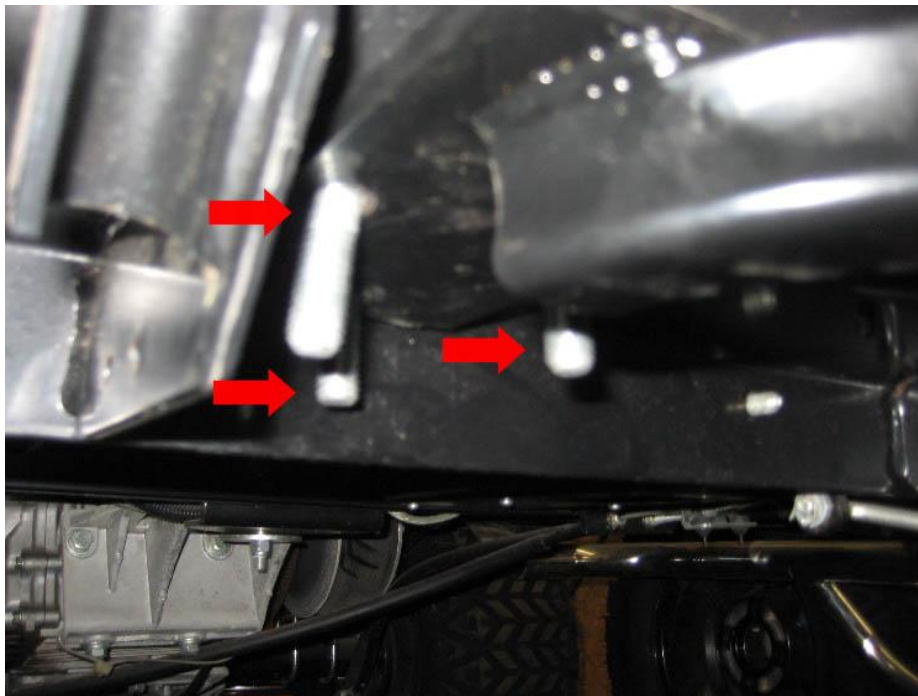
STEP 1

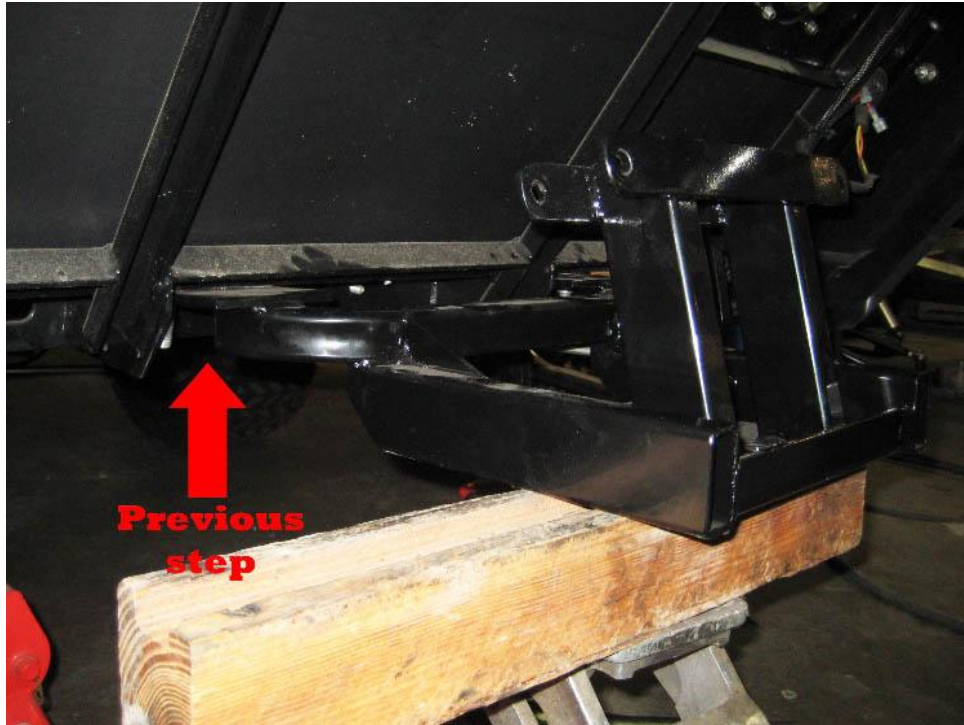
Remove all of OEM front suspension.



STEP 2

Place the carrier mount 6 existing OEM bolts on underside of cart and tighten down OEM nylos.



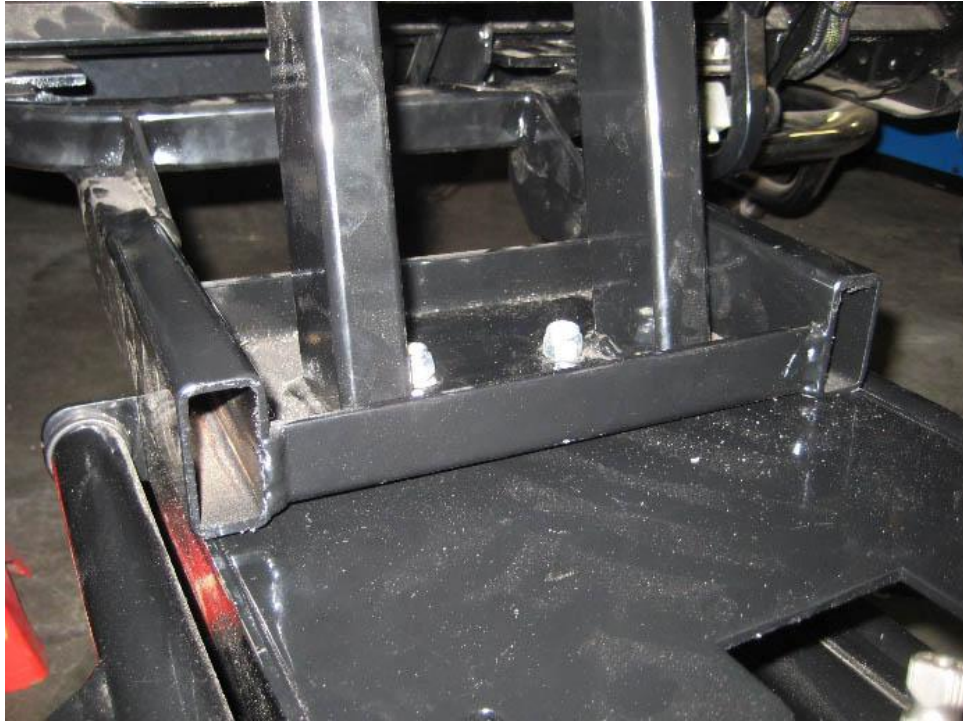


STEP 3

Place carrier under carrier mount installed in step 2. Line up holes and use two 1"x3/8" bolts to fasten together, but DO NOT TIGHTEN YET.

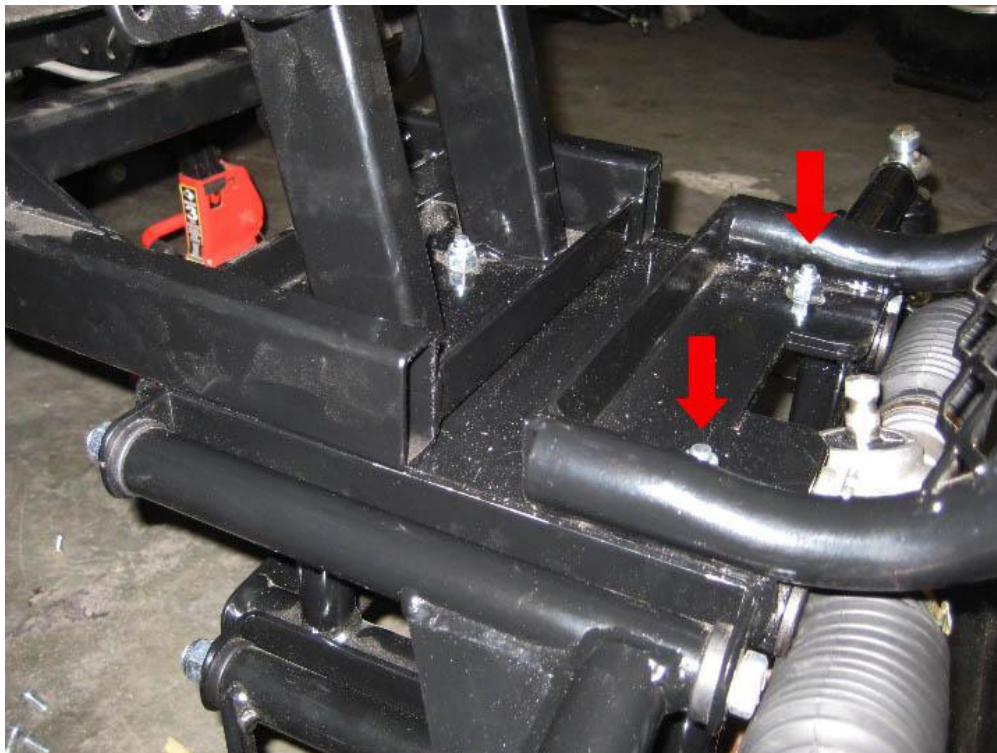


STEP 3 (Finished)



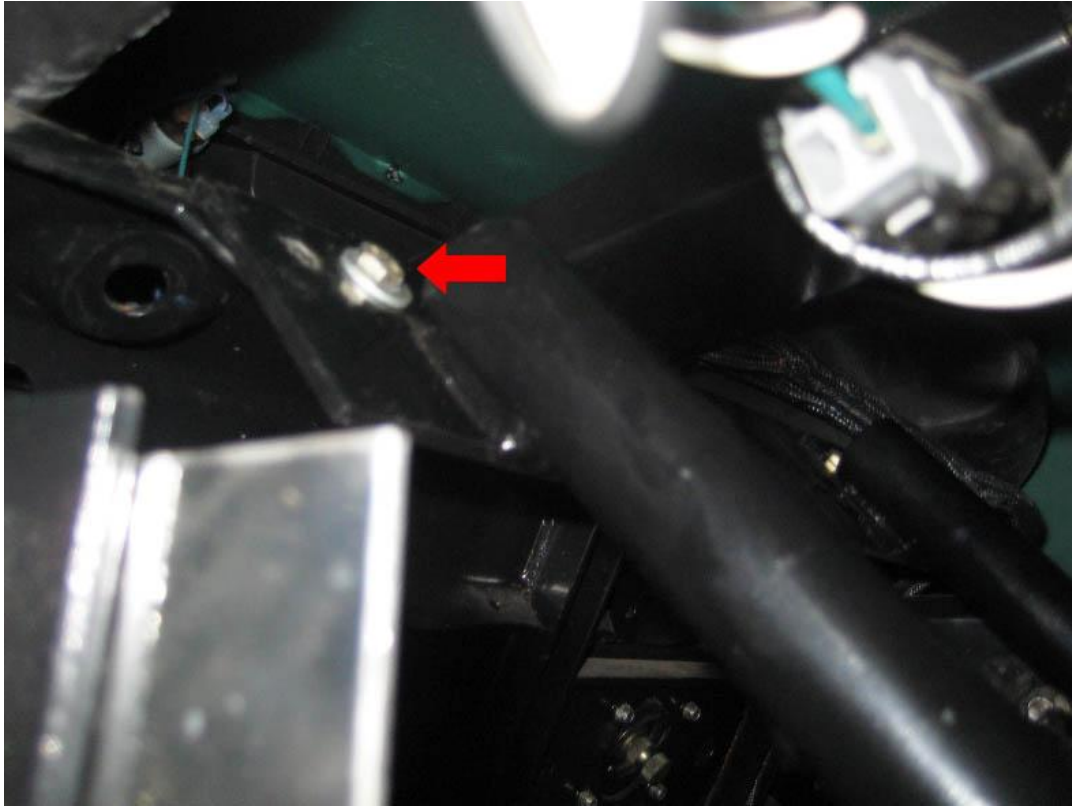
STEP 4

Place mesh hoop on top of already mounted carrier. Line holes up and place two 1"x3/8" bolts and fasten it together, but DO NOT TIGHTEN YET.



STEP 5

On upper portion of mesh hoop, line up holes and use two 1"x1/4" bolts and nylocs, with 1/4" washers on both sides, to fasten to hoop to frame.

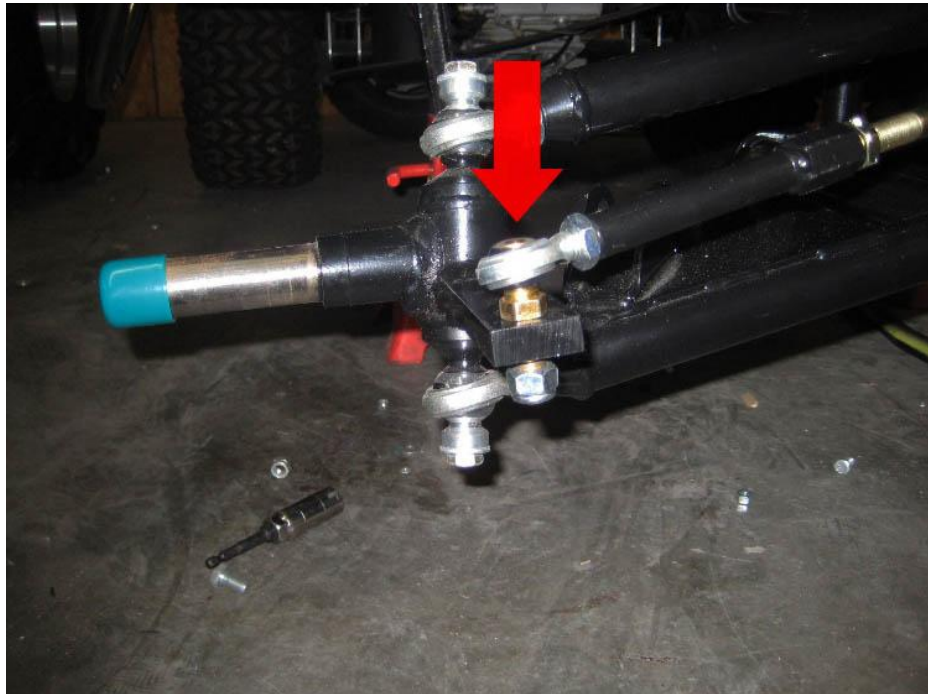


STEP 6

Go back and tighten all nylocs, on carrier and carrier mounts.

STEP 7

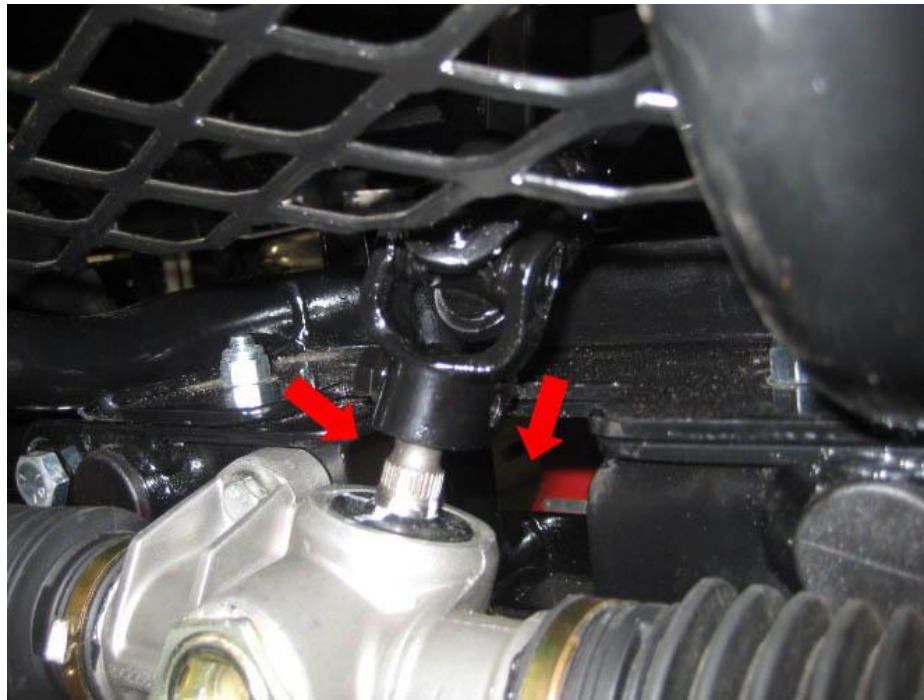
Place tie rod ball joint into spindle arm and tighten down 7/16" nyloc. Repeat this step for opposite side.



STEP 8

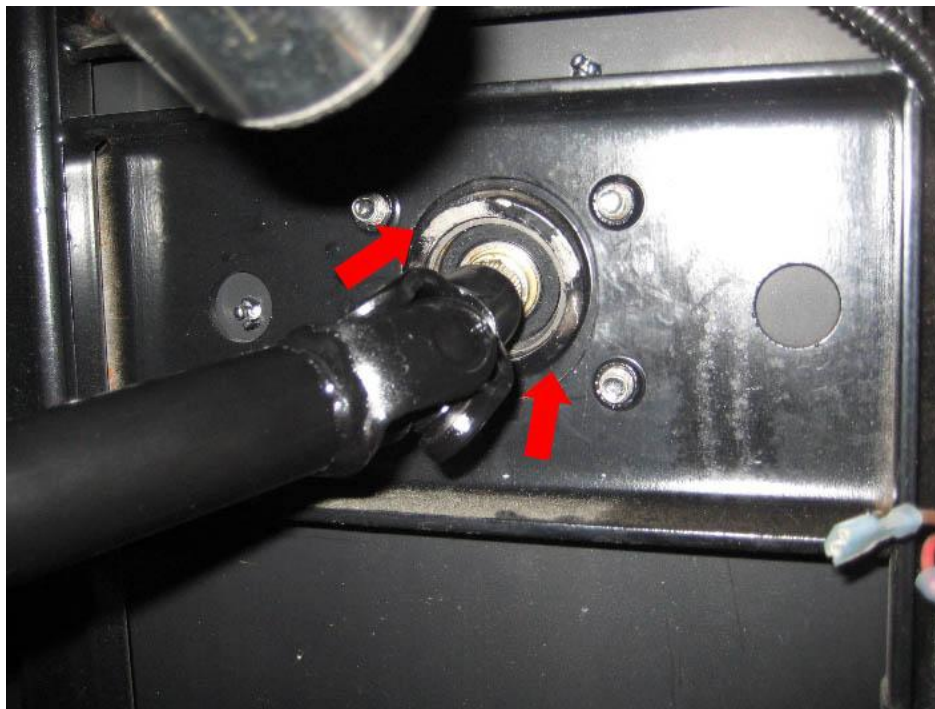
Place OEM hub over new spindle. Repeat this step for opposite side.





STEP 9

Take the new steering linkage and replace the OEM one, connecting the skinny end onto your steering rack and the opposite end at the end of the steering column. Tighten both bolts.



NOTE: *Remember to install shocks on the left and right sides.*