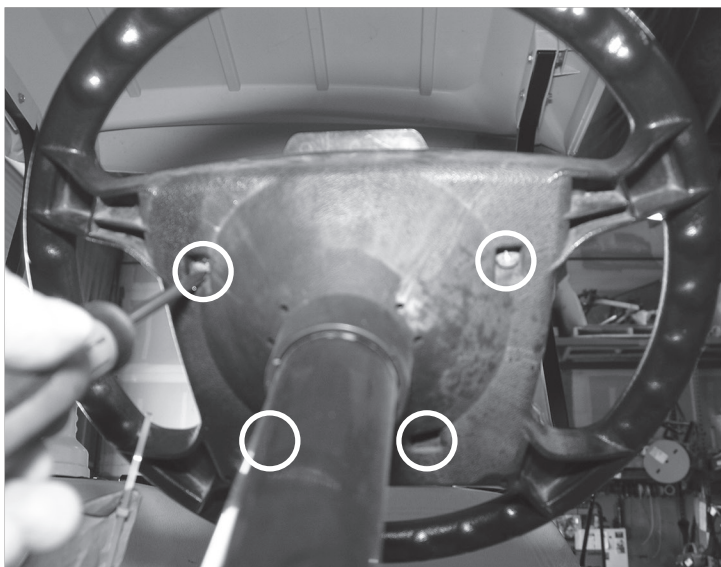
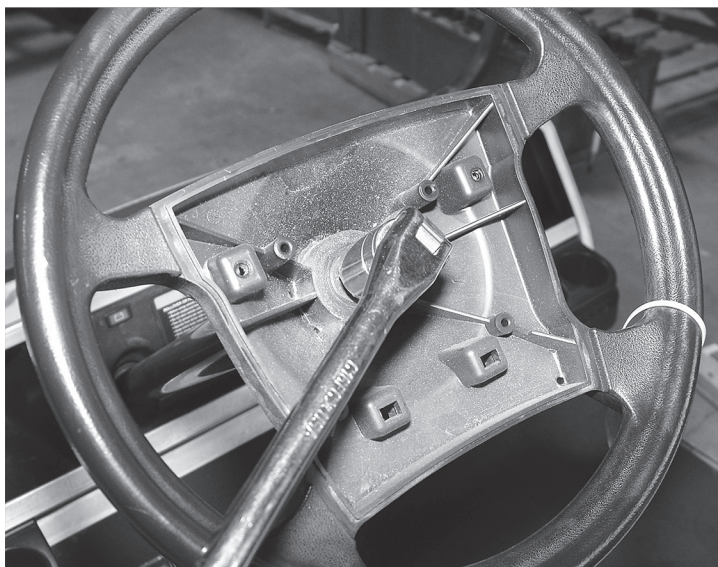


Club Car DS Dash Installation



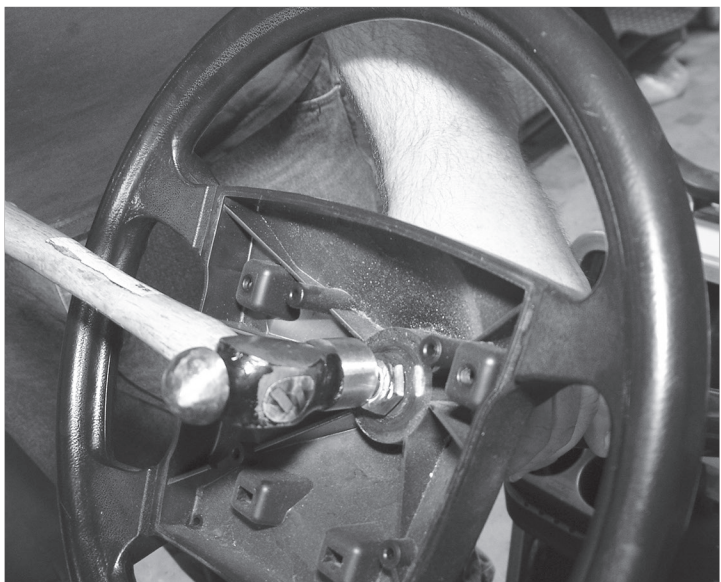
Step 1:

Remove the 4 philips screws shown and remove the score card holder.



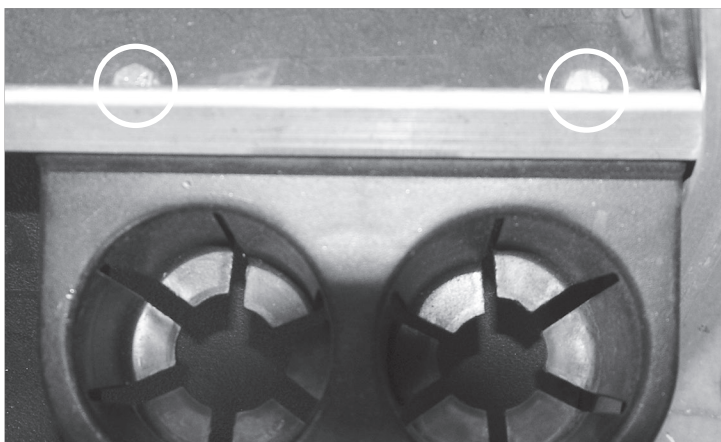
Step 2:

Loosen the 5/16" nut on the steering column.



Step 3:

Do not yank off the steering wheel because the column could come with it. If you do not have a puller then you will need to shock the steering wheel loose. First un-screw the 5/16" nut on the steering column until the top is flush with the top of the threads. Put your hand underneath the steering wheel and push up while tapping the top with a hammer. When you feel the steering wheel come loose remove the nut and remove the steering wheel.



Step 4:

Remove the 2 nuts on both drink holders and remove the drink holders.



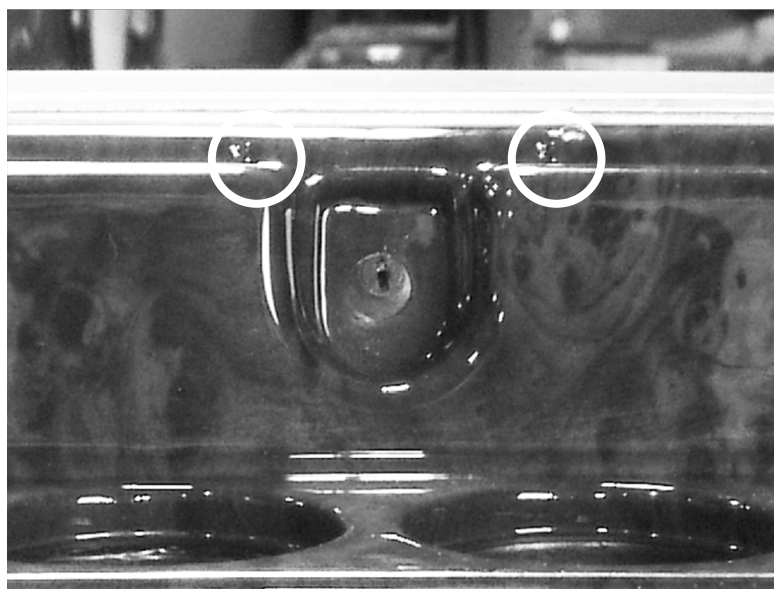
Step 5:

When drilling or screwing in the dash please use a piece of cardboard to protect the area around the holes from scratches.



Step 6:

Slide the dash onto the steering column and line up the dash. The drill points are indentions already made in the dash as shown. Use a long 1/8" drill bit for drilling the holes.



Step 7:

Start by lining up the key hole. Then drill a 1/8" hole into the dash cover and into the aluminum dash underneath. Then install a screw into each side of the key hole. Then work outward from the key hole around the dash drilling holes and installing the screws. Remember to use cardboard to prevent scuffs on the dash during this process.

Step 8:

Re- install the steering wheel making sure the wheels are lined up with the steering wheel. Then re-install the score card holder.

Enjoy your new dash.