



Club Car DS All Sports Seat Kit Installation Instructions



CLUB CAR DS ALL SPORTS SEAT KIT

Front Brackets:

5/16" X 1" (2)
5/16" x 1 1/2" (4)
5/16" Washer (10)
5/16" Nyloc (4)

Hand Strap:

1 Hand Strap

Rear Uprights & Step Plate Brackets:

5/16" X 1 1/2" (2)
5/16" Nylock (2)
5/16" Washer (4)

Main Frame:

5/16" X 1" (4)
5/16" Nylock (4)
5/16" Washer (8)

Side Rails:

5/16" X 1 1/2" (4)
5/16" Washer (8)
5/16" Nylock (2)
5/16" Acorn Nut (2)

Front Brace:

5/16" X 2 1/2" (4)
5/16" Nylock (4)
5/16" Washer (8)

Step Plate:

5/16" X 2 1/2" (2)
5/16" X 2" (2)
5/16" Nylock (4)
5/16" Washer (8)

Top Supports:

1/4" X 1 3/4" (4)
1/4" Washer (8)
1/4" Nyloc (4)

Front & Rear Seat Back:

1/4" X 1 3/4" (4)
1/4" X 1" (8)
1/4" Washer (16)
1/4 Nyloc (4)

Bottom Cushion:

Truss Screw (8)



Step 1: Remove OEM Seat back brackets, top supports & rear bumper. Install seat frame supports with 5/16" x 1 1/2" bolts, washers & nyloc nuts. Tighten bolts at this time. (Fig. 1)



Step 2: Install seat frame supports and step plate brackets to bumper mounts with 5/16" X 1 1/2" bolts, washers, & nyloc nuts. Do not tighten bolts. (Fig.2)



Step 3: Install seat frame with 5/16" X 1" bolts, washers & nyloc nuts (Fig. 3)



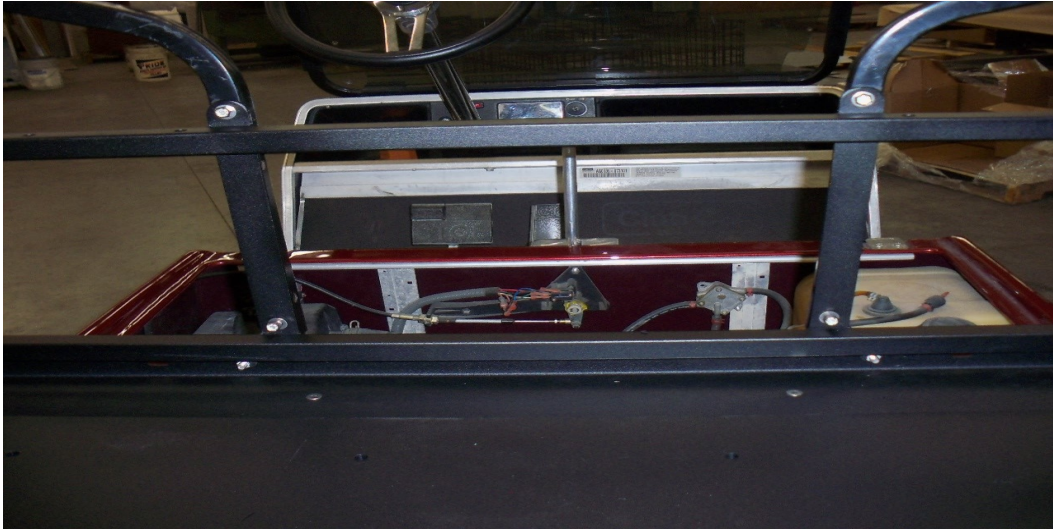
Step 4: Install side rails to seat frame with 5/16" X 1 1/2" bolts, washers, and 2 nyloc nuts & 2 acorn nuts. **Note:** Acorn nuts are installed on rear of side rails (Fig. 4)



Step 5: Install seat cushion frame with top support brackets facing front of cart with 5/16" X 2 1/2" bolts, washers & nyloc nuts (Fig. 5)



Step 6: Install step plate with 5/16" X 2" bolts, washers & nuts to bumper brackets. Install 5/16" X 2 1/2" bolts, washers, & nuts through side rails. Tighten all Hardware. (Fig. 6)



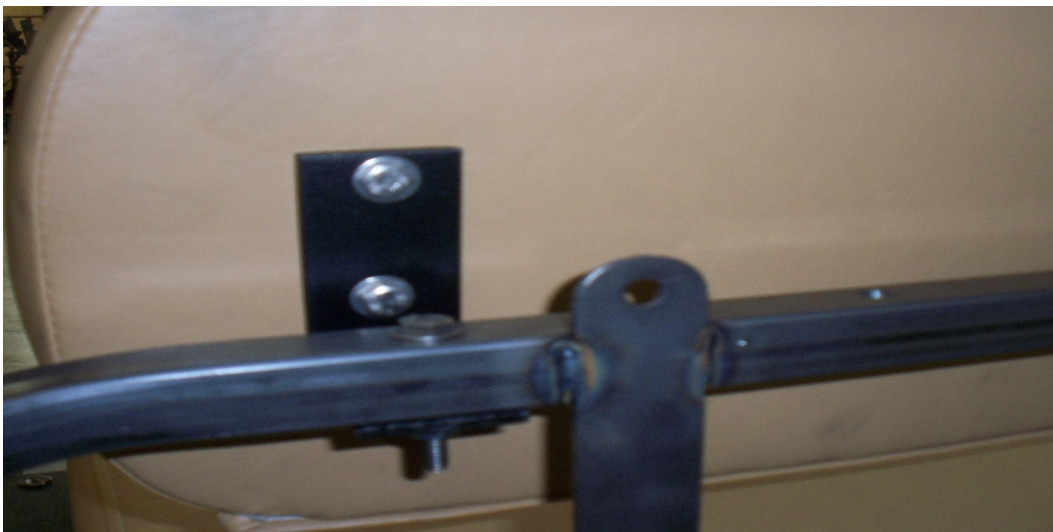
Step 7: Install top supports with 1/4" X 1 3/4" bolts, washers, & nuts (Fig. 7)



Step 8: Install front seat back cushion brackets with 1/4" X 1" bolts & washers (Fig. 8)



Step 9: Install front seat back cushion to seat frame with 1/4" X 1 3/4" bolts, washers & nuts (Fig. 9)



Step 10: Install rear seat back cushion brackets to cushion with 1/4" X 1" bolts & washers. Install cushion to seat frame with 1/4" X 1 3/4" bolts, washers & nuts(Fig.10)



Step 11: Install rear seat cushion to seat deck with eight 1/4" X 1 1/2" screws. Install seat strap between cushion & deck (Fig 11)